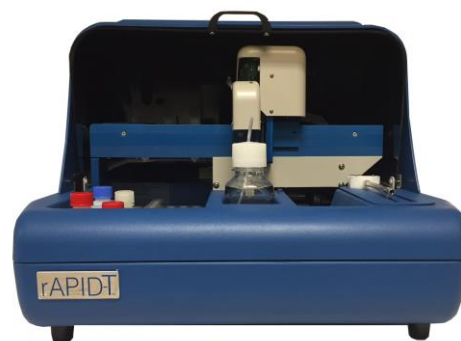




WINE ANALYSIS

Automated Solutions for your laboratory



ASTORIA • PACIFIC



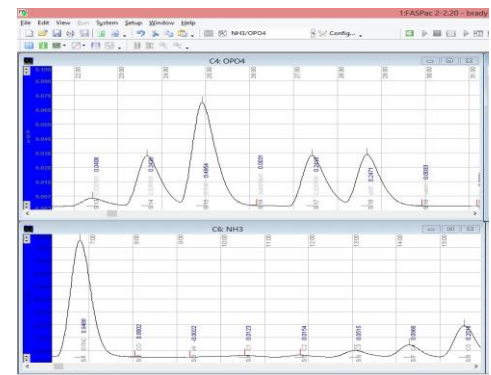
Astoria-Pacific offers wineries a variety of methods for their analytical needs. Depending on the test, two different analyzers are available.

To begin, the Astoria®2 Analyzer has been configured to monitor Free and/or Total Sulfite samples, which are determined using the DTNB method with Gas Diffusion Membrane. The working range for Free Sulfite is 5 – 100 mg/L.

This instrument has been designed for high throughput: **60 Sulfite determinations per hour**.

NOTE: This system is highly recommended for laboratories with high sample volumes.

Astoria-Pacific's Free Sulfite System

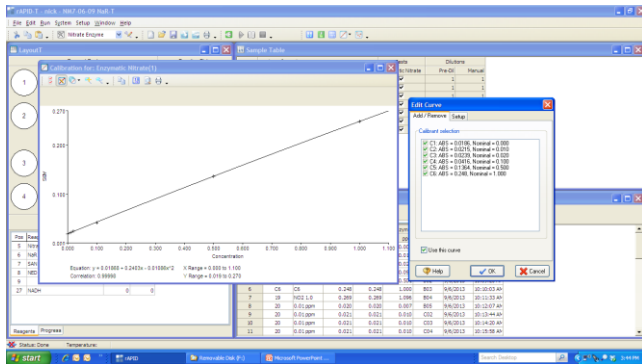


The Astoria2 Analyzer is the heart of the Free Sulfite System. It includes a sampler and diluter module for fast sample processing.

FASPac2 software is easy to use and can run up to 1000 samples in a single run!

ASTORIA • PACIFIC

rAPID-T System, software and analyzer



Secondly, the rAPID™-T system is an affordable discrete analyzer for small to large-scale wineries. Astoria-Pacific's wine customers use the rAPID-T system to analyze enzymatic and other colorimetric assays. The most common tests are: Acetic Acid, Ammonia, Glucose+Fructose, L-Malic Acid, NOPA and Total Sulfite. We have optimized and sell reagent kits for the above tests; however, the system is easily programmable to run various reagent kits from other manufacturers.

NOTE: Although the system offers this flexibility, the programming of different test kits and/or ranges are the sole responsibility of the customer and not Astoria-Pacific. We do sell reagent kits after all.

Please note that the software allows for two systems to be run simultaneously from one computer, thereby allowing the lab to keep up with increased production.

Most requested tests and ranges:

*NOTE: Tests/Hour is typical but may vary. Two tests can be determined in a single run

| Test | Range | Tests/hour* |
|------------------|----------------|-------------|
| Acetic Acid | 0.1 – 1.0 g/L | 80 |
| Ammonia | 10 – 100 mg/L | 80 |
| Glucose+Fructose | 0.1 – 6.0 g/L | 100 |
| L-Malic Acid | 0.05 – 3.0 g/L | 100 |
| NOPA | 5.0 – 140 mg/L | 80 |
| Total Sulfite | 5.0 – 200 mg/L | 100 |

Other Tests – Buy kits from other manufacturers, and you can program the system to run them:

| | |
|--------------------------------|------------------------------|
| Acetaldehyde | D-Mannitol/L-Arabitol |
| L-Arginine/Urea/Ammonia | Potassium |
| L-Ascorbic Acid | D-Sorbitol/Xylitol |
| Citric Acid | Succinic Acid |
| Ethanol | Sucrose/D-Fructose/D-Glucose |
| Formic Acid | Sucrose/D-Glucose |
| Free SO ₂ (Limited) | Tartaric Acid |
| D-Glucose | Total Acidity |
| D-Lactic | Total Starch |
| L-Lactic Acid | Urea/Ammonia |

We are dedicated to quality. Please contact your local Astoria-Pacific representative today, and consider us for your laboratory.

ASTORIA • PACIFIC

www.astoria-pacific.com
 800-536-3111 (USA/Canada) / 1-503-657-3010
 sales@astoria-pacific.com