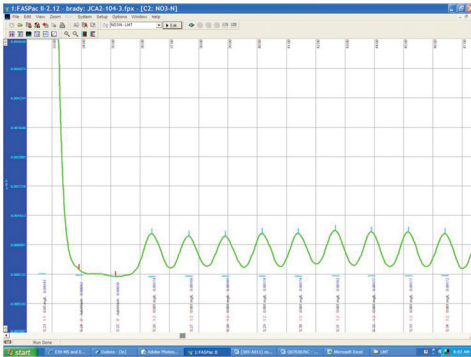


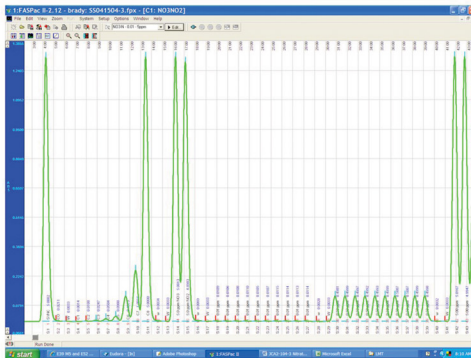
# Nitrate A173

## Example 1 - Range: 0.001 - 1.0 mg/L



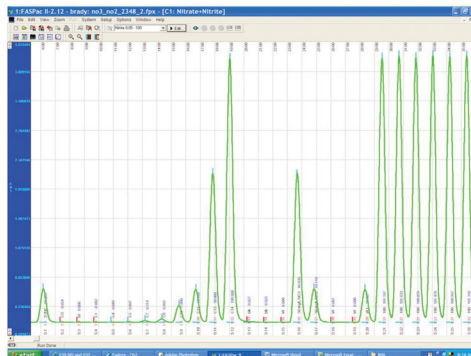
**Nitrate A173-LMT**  
Range: 0.001 - 1.0 mg/L (as N)  
MDL=0.0002 mg/L (as N)  
Analysis rate: 48 samples/hour

## Example 2 - Range: 0.01 - 5 mg/L



**Nitrate A173-A00**  
Range: 0.01 - 5 mg/L (as N)  
MDL=0.001 mg/L (as N)  
Analysis rate: 65 samples/hour

## Example 3 - Range: 0.05 - 100 mg/L



**Nitrate A173-B00**  
Range: 0.05 - 100 mg/L (as N)  
MDL=0.006 mg/L (as N)  
Analysis rate: 72 samples/hour